

Disclaimer on Multilingual OTC Product Information

- This product is a pharmaceutical product approved under a Japanese law, the Law for Ensuring the Quality, Efficacy and Safety of Drugs and Medical Devices, with a view to its sale and use in Japan.
- Multilingual product information is a translation of the product labeling written in Japanese and provided for your information only. It does not warrant that its contents and the product itself conforms to laws and regulations in countries other than Japan.
- Multilingual product information is a tentative translation by Our Company, and may be modified or altered without notice.
- Our Company assumes no responsibility for any occurred problem attributable to the contents of the multilingual product information.

For relief of pain and itching due to hemorrhoids

BORRAGINOL[®] M SUPPOSITORIES

[Category 2 OTC medicines]

(External medicine for hemorrhoids)

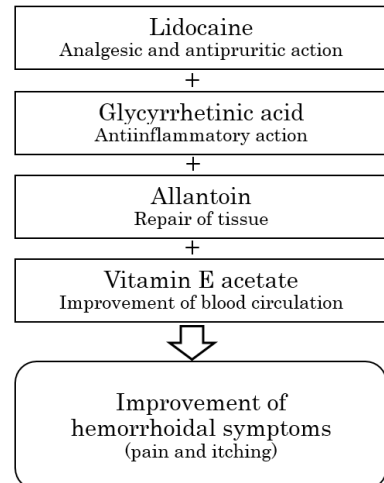
CHARACTERISTICS

1. Four ingredients effectively act to relieve pain and itching due to hemorrhoids.

- Lidocaine relieves pain and itching, while glycyrrhetic acid suppresses inflammation, and helps relieve the hemorrhoidal symptoms.
- Allantoin accelerates wound healing and repairs damaged tissues while vitamin E acetate helps to relieve the hemorrhoidal symptoms by improving blood circulation.

2. To facilitate its therapeutic effect, this product is designed to act directly on the affected areas, using an oily base that melts rapidly at body temperature.

- An easy-to-insert, little irritant oily base protects damaged lesion, and helps smooth bowel movement.
- This is a white to slightly yellowish white suppository packaged in an aluminum container.



⚠️ PRECAUTIONS

⊗ When not to use the product

(If you do not follow these instructions, the current symptoms may worsen or adverse reactions are more likely to occur.)

1. This product should not be used in the following persons.

Persons who have had an allergic symptom to this product or its ingredients.

2. Do not use this product regularly for long periods.

👤 Consultation

1. The following persons should contact a physician, pharmacist, or registered salesperson for a consultation before use.

- (1) Persons undergoing medical treatment from a physician.
- (2) Pregnant women or women suspected of being pregnant.
- (3) The elderly.
- (4) Persons who have experienced allergic symptoms associated with drugs, etc.
- (5) Persons with oedema.
- (6) Persons diagnosed as kidney disease, hypertension or heart disease.

2. If the following symptoms are observed after using this product, these may be adverse reactions, so immediately discontinue the use, and show this leaflet to your physician, pharmacist, or registered salesperson for a consultation.

Affected parts	Symptoms
Skin	Rash/redness, itching, swelling
Others	Irritation

The following serious symptoms may occur in rare cases. In such cases, immediately seek medical aid.

Name of symptoms	Symptoms
Shock (Anaphylaxis)	Symptoms, such as itching of skin, urticaria, hoarseness, sneezing, itchy throat, breathing difficulties, palpitations, and clouding of consciousness may occur immediately after use.
Pseudoaldosteronism, myopathy	In addition to listlessness, numbness, stretched feeling, and stiffness of hands and feet, feeling of weakness and muscular pain will appear and gradually progress

3. When symptoms do not improve even after using this product for about 10 days, stop using this product and consult a physician, pharmacist or registered salesperson, being sure to take this leaflet with you.

USES

Relief of pain and itching due to hemorrhoids (piles) and anal fissure

DOSAGE AND DIRECTIONS

Remove the aluminum container, and insert the suppository into the anus at the following dose.

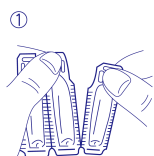
Age	Dose	Time of medication per day
Adults(15 years old and over)	1 suppository	1 to 2 times
Under 15 years old	This product should not be used.	

<Precautions of dosage and directions>

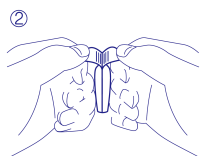
- (1) If the suppository is too soft, cool it for a while before use. If the surface of the suppository is too hard during the cold season or when stored at low temperature, warm it by holding with the hand until it becomes smooth.
- (2) This product must be used only for the anus.
- (3) Use this product strictly as directed under DOSAGE AND DIRECTIONS in this leaflet.

How to take out and insert the suppository

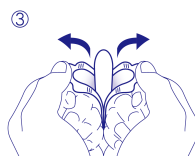
- This product is particularly effective if inserted after bowel movement or bathing, or at bedtime. -



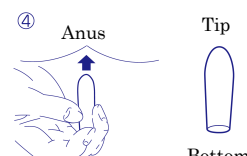
① Tear off one piece from the aluminum sheet.



② Pinch the top of the aluminum container one by one with both hands.



③ Take out the suppository from the aluminum container by opening from side to side with both hands.



④ Holding the bottom of the suppository, insert the tip into the anus and push with the finger until the suppository is thoroughly insert into the rectum.

※Be careful not to hurt your hands and fingers by the aluminum container.

Cautions after insertion


1. Avoid vigorous exercise immediately after insertion to prevent the suppository from coming out.
2. You may sense a foreign matter in the rectum after insertion, but this feeling will disappear as the suppository melts.
3. You may find an oily material on feces after bowel movement, but do not worry about it because this is the melted oily base.

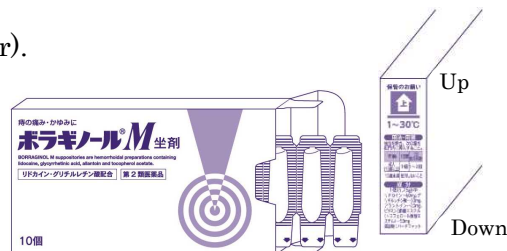
INGREDIENTS per one suppository (1.75 g)

Actions	Ingredients	Contents (in each suppository)
Relief of local pain and itching	Lidocaine	60 mg
Suppression of inflammation	Glycyrrhetic acid	30 mg
Acceleration of wound healing and repair of tissue	Allantoin	20 mg
Improvement of congestion by promoting peripheral blood circulation	Vitamin E acetate (Tocopherol acetate)	50 mg

Additive: Hard fat

***PRECAUTIONS FOR STORAGE AND HANDLING**

- (1) Store this product at temperature between 1 to 30°C.
 - As the suppository is designed to melt at body temperature, store in a cool place away from the direct sunlight.
 - After opening, as illustrated by the diagram below, place the suppositories tip down and store in the package in an upright position ().
- (2) Avoid storing at temperature 0°C or below (cracks may occur).
- (3) Keep out of reach of children.
- (4) Do not transfer the product to a different container.
(It may lead to misuse or alter the quality of the product.)
- (5) Do not use this product after the expiration date.
- (6) If melted suppository leaked and attached to clothes after inserting this product, it may become hard to remove.



HOW SUPPLIED 10 and 30 suppositories

How to prevent hemorrhoids

- Prevent hemorrhoids by maintaining a healthy life style. -

- (1) To keep regular bowel movement, eat balanced meals three times a day.



- (2) Keep the anal area clean. Bathing is particularly effective in promoting blood circulation in the anus.



- (3) Avoid excessive strain during bowel movement.



Marketing authorization held by: AMATO PHARMACEUTICAL PRODUCTS, LTD.

ED9